

FUJIFILM
Value from Innovation

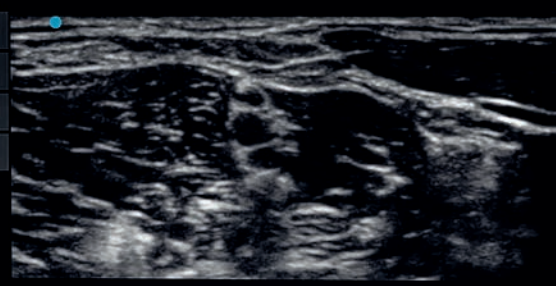
SonoSite SII



Gen MB

- Transducer
- Patient
- Annotate
- Settings

Nrv
HFL
MI
0.7
TIS
0.1
144



1.8

144 <>>

Callipers Calcs Zoom

Two large silver knobs and a play button icon.

Buttons labeled M, C, 2D, and icons for camera and video recording.

EMPOWERING
EFFICIENCY.

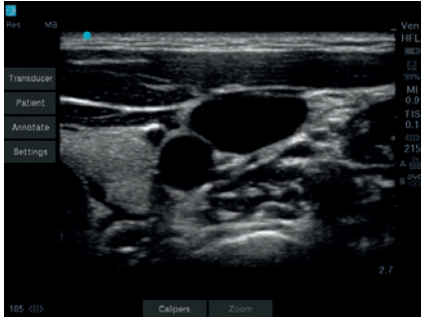


TRANSFORMING THE
PACE OF YOUR PRACTICE,
THROUGH SIMPLY,
SMART ULTRASOUND.

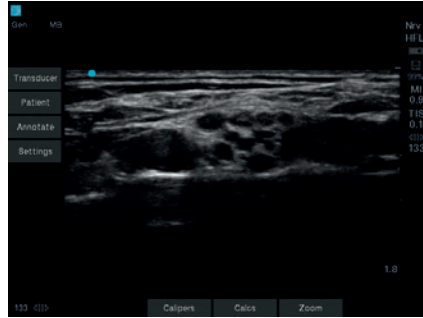
The SII empowers your efficiency through an intuitive, yet smart user interface that adapts to your imaging needs. The system is portable and can be used across multiple hospital environments, including a zero footprint option for space-constrained rooms. We listened to you and designed the SII system to maximize the productivity of your practice, and support you in providing simply the best patient care.

5

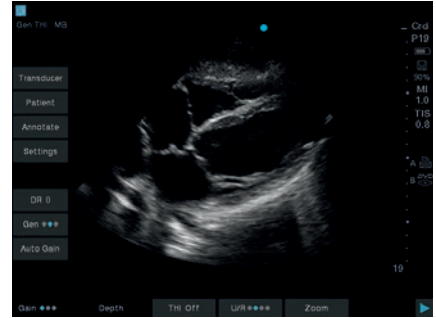
TECHNOLOGY DRIVEN
5-YEAR STANDARD WARRANTY



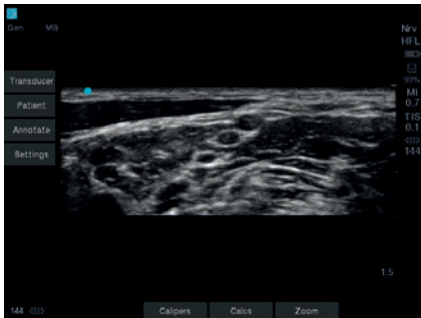
HFL38xi – Internal Jugular Vein



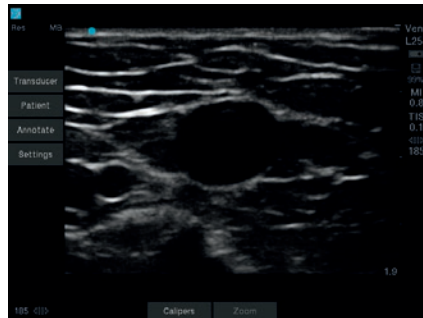
HFL38xi – Supraclavicular



rP19x – Subcostal Cardiac



HFL38xi – Interscalene



L25x – Basilic Vein



rC60xi – Portal Vein

VISUALIZATION, CLEARLY ENHANCED.

ELEVATED COLOR SENSITIVITY

Through a dual flex and thin lens design, combined with new advancements in image optimization, the HFL38xi was engineered for increased penetration, clarity, and color sensitivity. You can now better visualize nerves and vessels, whether it be for procedural guidance or flow analysis.

OPTIMIZED IMAGING EXPERIENCE

DirectClear Technology is a novel, patent-pending process that elevates transducer performance:

- Improved penetration and contrast resolution: Unlike conventional SonoSite transducers, a more efficient material has been embedded into the design that allows for the generation of more acoustic signal. In parallel, a reflective layer has been added to reduce the loss of this signal, as it is transmitted into the patient.
- Sharpened detail resolution: An additional layer has been added to provide a better acoustic match between the transducer and the patient, increasing the ability to resolve small structures and aid in your diagnostic confidence.

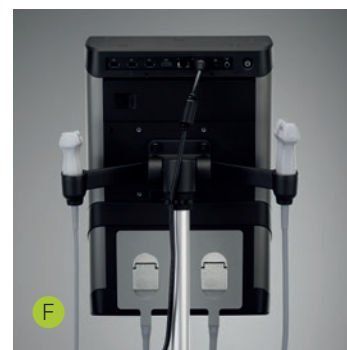
SonoSite S11

INTELLIGENCE,
INSPIRED BY YOU.

- A Touchscreen menu automatically adapts to your needs
- B Tactile knobs for gain and depth control
- C Virtual track pad displays only when needed
- D Flexible control of caliper, zoom, and color box through virtual track pad or touchscreen
- E Easy access to commonly used controls (Mode, Print, Save)
- F Embedded Dual Transducer Connector. Switch exam types or transducers with two taps on the screen

WORKFLOW EXTENDED,
FROM SYSTEM TO STAND.

- G Lockable drawer with tray behind system
- H Dedicated gel bottle holder
- I Elevated transducer holders
- J Large storage basket



SONOSITE SII TRANSDUCERS



L38xi ●●

10-5 MHz Linear

Applications:

lung, nerve, small parts, arterial, venous

Scan depth: 9 cm



HFL38xi ●●

13-6 MHz Linear

Applications:

breast, lung, musculoskeletal, nerve, ophthalmic, small parts, arterial, venous

Scan depth: 6 cm



HFL50x ●

15-6 MHz Linear

Applications:

breast, musculoskeletal, nerve, small parts

Scan depth: 6 cm



L25x ●●●

13-6 MHz Linear

Applications:

lung, musculoskeletal, nerve, superficial, arterial, venous, ophthalmic

Scan depth: 6 cm



C11x

8-5 MHz Curved

Applications:

abdominal, neonatal, nerve, venous, arterial, cardiology (vet)

Scan depth: 13 cm



rC60xi ●●●●

5-2 MHz Curved

Applications:

abdominal, musculoskeletal, nerve, ob, gyn

Scan depth: 30 cm



ICTx ●

8-5 MHz Curved

Applications:

ob, gyn

Scan depth: 13 cm



rP19x ●●●●

5-1 MHz Phased

Applications:

abdominal, cardiology, lung, ob

Scan depth: 35 cm



P10x ●

8-4 MHz Phased

Applications:

ped. abdominal, ped. cardiology, neonatal head

Scan depth: 14 cm



HSL25x

13-6 MHz Linear

Applications:

lung, musculoskeletal, nerve, superficial, arterial, venous, ophthalmic

Scan depth: 6 cm



L52x (Vet) ●

10-5 MHz Linear

Applications:

musculoskeletal, ob, arterial

Scan depth: 15 cm



C35x ●

8-3 MHz Curved

Applications:

abdominal, musculoskeletal, nerve, ob, spine

Scan depth: 16 cm



C8x ●

8-5 MHz Curved

Applications:

prostate

Scan depth: 11.5 cm

- DirectClear Technology.
- Optional Armored Cable.
- Needle guides and kits available.
- A transverse needle guide available.

SYSTEM SPECIFICATIONS

System weight	12.6 lbs./5.70 kg with battery
Dimensions	17.6" x 11.5" x 4.8" / 44.7 cm x 29.3 cm x 12.3 cm
Display	12.1"/30.7 cm diagonal LCD (NTSC or PAL) with chemically- etched glass layer
Viewing Angles:	85° up/down/left/right
Architecture	All-digital broadband
Dynamic range	Up to 165 dB
Gray scale	256 shades
HIPAA compliance	Comprehensive tool set

MOUNTING OPTIONS

Video Electronics Standards Association (VESA™)
Mounting: (2.9" x 2.9" / 75mm x 75mm) and
(3.9" x 3.9" / 100mm x 100mm)

IMAGING MODES

2D / Tissue Harmonic Imaging / M-Mode
Color Doppler and Velocity Color
Pulsed Wave Doppler / Continuous Wave Doppler /
ECG

IMAGE PROCESSING

SonoADAPT™ Tissue Optimization
SonoHD2™ Imaging Technology
Dual Imaging, Duplex Imaging, 2x pan/zoom
capability, Dynamic range and gain
ColorHD™ Technology

STEEP NEEDLE PROFILING

C35x – Nerve, MSK, Spine
HFL38xi – Nerve, MSK, Breast, Small Parts,
Arterial, Venous
HFL50x – Nerve, MSK, Breast, Small Parts
L25x – Nerve, MSK, Arterial, Venous
HSL25x – Nerve, MSK, Arterial, Venous
L38xi – Nerve
rC60xi – Nerve, MSK

USER INTERFACE

Gain control through tactile knob: overall, near, far
Depth control via tactile knob
Adaptive touchscreen display with menus optimized
for current system state
Easy access to commonly used controls on capacitive
touch pad. (Scan/Freeze, Modes, Print, Save Clip,
Save Image)
Touchscreen manipulation for Calipers, Zoom and
Color Box (Virtual track pad also available)

TRANSDUCERS

Broadband/Multifrequency:

Armored Cable Technology (optional on L38xi,
HFL38xi, L25x, rC60xi, rP19x, L52x)
Linear Array, Curved Array, Phased Array,
Micro-Convex
Center line marker for linear transducers
Exam types: abdominal, breast, cardiology, gyn,
lung, musculoskeletal, neonatal, nerve, ob, ophthalmic,
small parts, spine, superficial, TCD, arterial, venous
Embedded Dual Transducer Connector with 2-tap
transducer switching function

DURABILITY

Drop-tested at 3 feet/91.4 cm

APPLICATION SPECIFIC CALCULATIONS

OB/Gyn/Fertility: Diameter/ellipse measurements,
volume, ten follicle measurements, estimated fetal
weight, established due date, gestational age, last
menstrual period, growth charts, user-defined tables,
multiple user-selectable authors, ratios, amniotic fluid
index, patient report, humerus and tibia measurement
and charts, HR, Fetal HR, MCA, UMBA, Ovarian
Volume, Follicle Volume, Uterine Volume, Endometrial
thickness

Arterial: Diameter/ellipse/trace measurements,
volume, volume flow, percent diameter and area
reduction, Lt/Rt CCA, ICA, ECA, ICA/CCA ratio,
peak trace, ICA/CCA ratio, patient report, HR, Bulb,
Vertebral Artery, TAP

Cardiac: LVO, Automated Cardiac Output package
and patient report including: ventricular, aortic and
atrial measurements; ejection fraction, volume
measurements, Simpson's rule, continuity equation,
pressure half-time and cardiac output; IVC Collapse
Ratio, LA/RA Volume, TAPSE, PA AT, TV E, A, PHT,
TVI, MV time, Pulm Veins, LV Mass, TDI e', TDI a', HR,
dP:dT, Qp/Qs

Ability to view EF and FS simultaneously

Transcranial Doppler (TCD): Complete TCD package
including Time Average Peak (TAP)

ONBOARD IMAGE AND CLIP STORAGE/REVIEW

16 GB internal flash memory storage capability
Storage support for up to 500 patients
Clip Store capability (maximum single clip length:
60 seconds)
Start/Stop toggle capability for clips
USB Auto Export
Encryption of patient data on system
Cine review up to 255 frame-by-frame images

MEASUREMENT TOOLS, PICTOGRAMS AND ANNOTATIONS

2D: Distance calipers, ellipse and manual trace

M-Mode: Distance and time measurements,
heart rate calculation

User-selectable text and pictograms

User-defined, application-specific annotations

Biopsy guidelines

CONNECTIVITY (EXTERNAL DATA MANAGEMENT)

SonoSite Patient Data Archival Software (PDAS) for
Wireless/Wired Image management
Telexy Qpath E exam management compatibility
DICOM® Image Management (TCP/IP): Print and
Store, Modality Work List, Storage Commit: Modality,
Perform, Procedure Step
Direct writing capability to USB 2.0 mass storage
removable media (PC and MAC compatible)
Supported export formats: MPEG-4 (H.264), JPEG,
BMP, and HTML

CONNECTIVITY (SYSTEM PORTS)

HDMI output to external display
Composite video output (NTSC/PAL) to VCR or video
printer
Audio output
Integrated speakers
Ethernet or wireless image/data transfer
2.4 GHz and 5 GHz Wireless: 802.11 (B, G and N
networking)
FIPS 140-2 Security Encryption
USB ports (3)

POWER SUPPLY

System operates via battery or AC power
Rechargeable lithium-ion battery
AC: universal power adapter, 100-240 VAC,
50/60 Hz input, 15 VDC output
Less than 25 sec. from power-on to scanning

SII STAND AND PERIPHERALS

Hydraulic height adjustment, shelf for printer
Elevated transducer holders
Dedicated gel holder
Tray with drawer on back of system
Large basket with easy removal feature for cleaning
(optional 2nd basket)
AC Cord Retainer
Cable management hooks for auxiliary cables
Optional foot switch
Optional PowerPark and PowerPack

OPTIONAL PERIPHERALS

Printers: Medical-grade black and white

External data input devices: Bar code reader

ECG Slave Cable and Adapter Kit: Used to interface
with external ECG monitors

ECG module: 3-lead ECG – works with standard ECG
leads and electrodes

Bluetooth is a registered trademark of Bluetooth SIG, Inc.

Mac is a trademark of Apple Inc., registered in the U.S. and other countries.

DICOM is the registered trademark of the National Electrical Manufacturers
Association for its standards publications relating to digital communications
of medical information.

FUJIFILM
Value from Innovation

FUJIFILM SonoSite, Inc.
Worldwide Headquarters
21919 30th Drive SE, Bothell, WA 98021-3904
Tel: +1 (425) 951 1200 or +1 (877) 657 8050
Fax: +1 (425) 951 6800
www.sonosite.com

SonoSite Worldwide Offices
FUJIFILM SonoSite Australasia Pty Ltd: Australia 1300 663 516
FUJIFILM SonoSite Australasia Pty Ltd: New Zealand 0800 888 204
FUJIFILM SonoSite Brazil +55 11 5574 7747
FUJIFILM SonoSite Canada Inc. +1 888 554 5502
FUJIFILM (China) Investment Co., Ltd +86 21 5010 6000
FUJIFILM SonoSite GmbH – Germany +49 69 80 88 40 30
FUJIFILM SonoSite, Inc. – USA +1 425 951 1200

FUJIFILM SonoSite India Pvt Ltd. +91 124 288 1100
FUJIFILM SonoSite Iberica SL – Spain +34 91 123 84 51
FUJIFILM Medical Co., Ltd. – Japan +81 3 0418 7190
FUJIFILM SonoSite Korea Ltd +65 6380 5589
FUJIFILM SonoSite Ltd – United Kingdom +44 1462 341 151
FUJIFILM SonoSite SARL – France +33 182 880 702